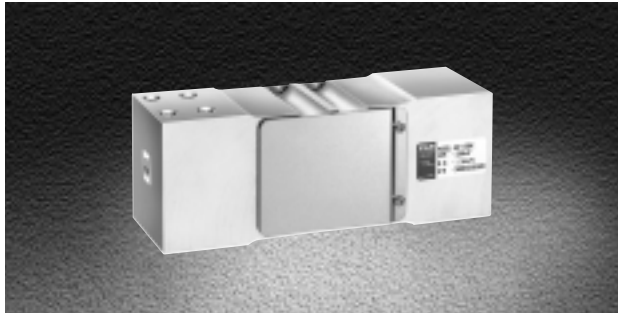


BC-X, BC-SS single point load cell 60, 150, 300kgf

Load Cell



FEATURES

- Water proof type
- Off center compensated
- Protection class IP66
- All stainless steel construction(BC-SS)

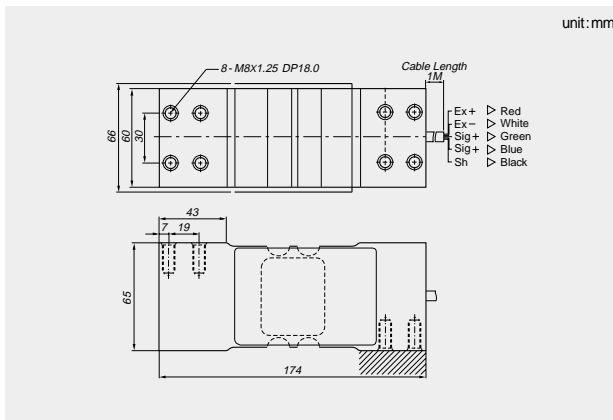
OPTIONS

- OIML C3 approved(BC-X)

SPECIFICATIONS

Max. capacity	kgf	60, 150, 300
Rated output	mV/V	1.2 ± 10% R.O
Zero balance	mV/V	0 ± 10% R.O
Accuracy class		C3(BC-X)
Combined error	%	< 0.02
Repeatability	%	< 0.01
Creep for 30min.	%	< 0.017
Temperature effect on		
Zero Value	%/10℃	0.014
Output value	%/10℃	0.011
Excitation		
Recommended	V	10
Maximum	V	15
Resistance		
Input	Ω	420 ± 20
Output	Ω	350 ± 3.5
Insulation	MΩ	> 2,000
Compensated temperature range	℃	-10 to +40
Operating temperature range	℃	-20 to +70

DIMENSIONS



Material

Anodized Aluminum(BC-X)
Stainless Steel(BC-SS)

Mounting

Socket-head cap screw M8 × 1.25(10.9)
Tightening torque : 29Nm

Cable

Braided Shield 4-wire round cable
with PVC-Jacket

Maximum Platform Size

400 × 600mm(W × L)

Ordering Information

BC - 00X

Capacity in kg

BC - XXXSS

Capacity in kg

